

Revitalization of Kraslava

Metra
Irina
Abdallah
Eriks



Task

Finding connections to and from the river.

Route along the river within the Krāslava town – mapping the type and quality of the connections.

Functionalities and shortcomings.

Areas near the river and functions.

Expected outcome: situation overview and recommendations for crucial connections and most effective improvements.



Theme

From river to waters

Lazaretnaja

Jāņupīte

Mīlestības avots

Florupīte



Water and DNA of the town but it's hidden

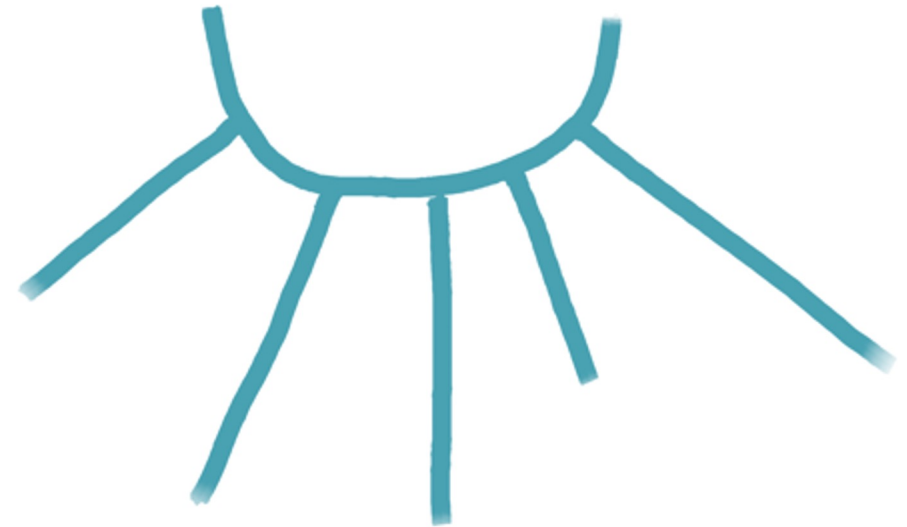
Coat of arms



Rivers on the map



Blue finger principle



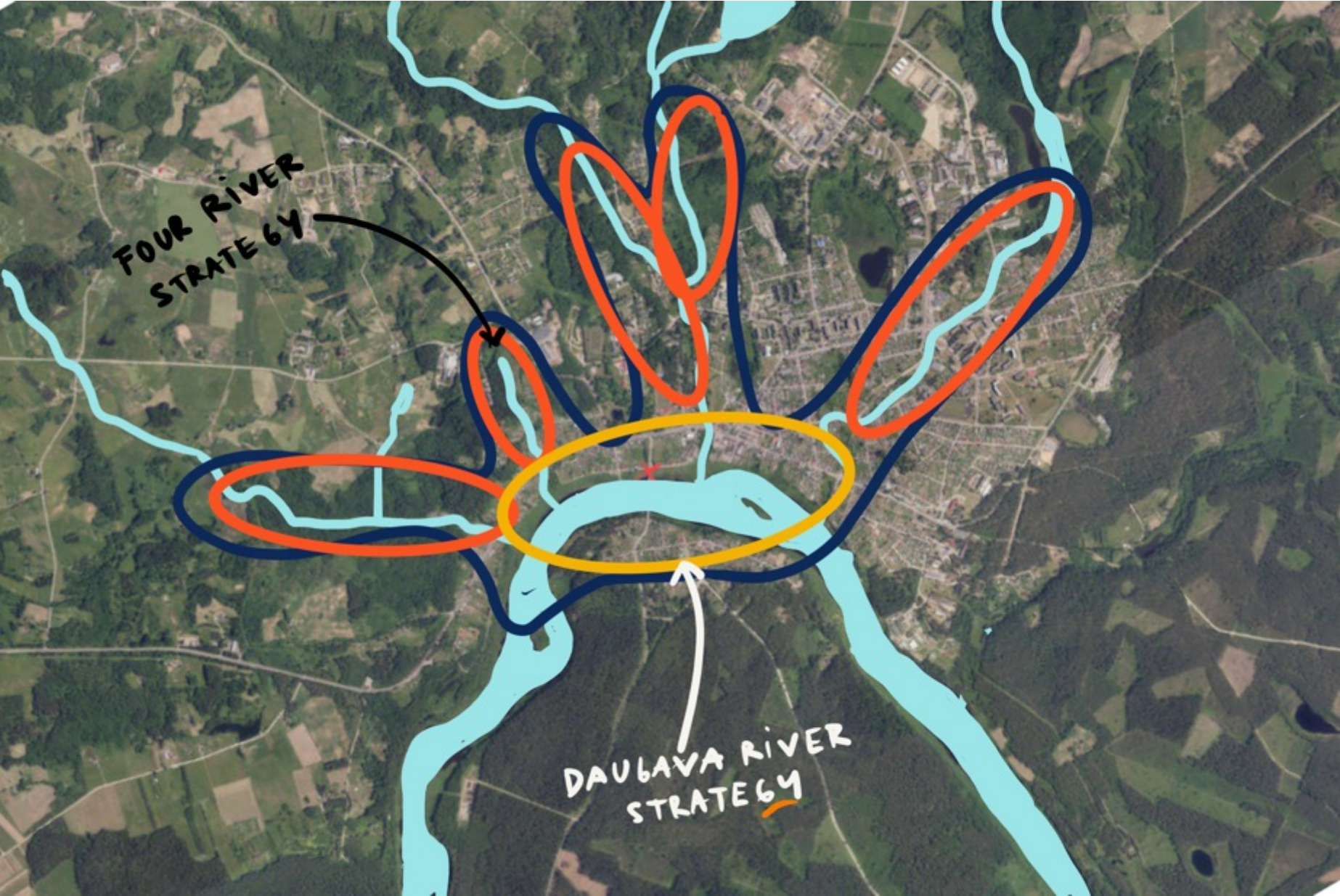
Spot the river?



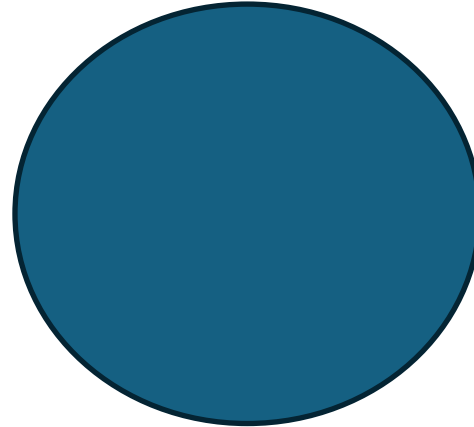


Blue fingers of Kraslava town

Rivers & strategies



5 river strategy



Lazaretnaja	Jāņupīte	Mīlestības avots	Olksna	Florupīte
<p>Residential area Private type river Minimal public access Lively and full with amenities</p> <p>Action: Visible water Clean shoreline</p>	<p>Central green green structure Pathways Pockets for recreation</p> <p>Action Create masterplan developing gathering and community space</p>	<p>Connection between Karnicka kalns and Daugava (potential future promenade)</p> <p>Action Extension to connect with Kaplavas street</p>		<p>Green area of the neighbourhood Recreational area (existing) Water collection point</p> <p>Action Extending visible and accessible area (grass cutting) Adding benches</p>



Daugava strategy

Nature – Recreation area connections

Accessible path for fisherman and pedestrians

Promenade along Riga street (Karnicka street – Kaplavas street - Parceltuves street)

Seating areas in zones currently used by locals

Ostas street parking area improvements



Daugava strategy



Daugava strategy

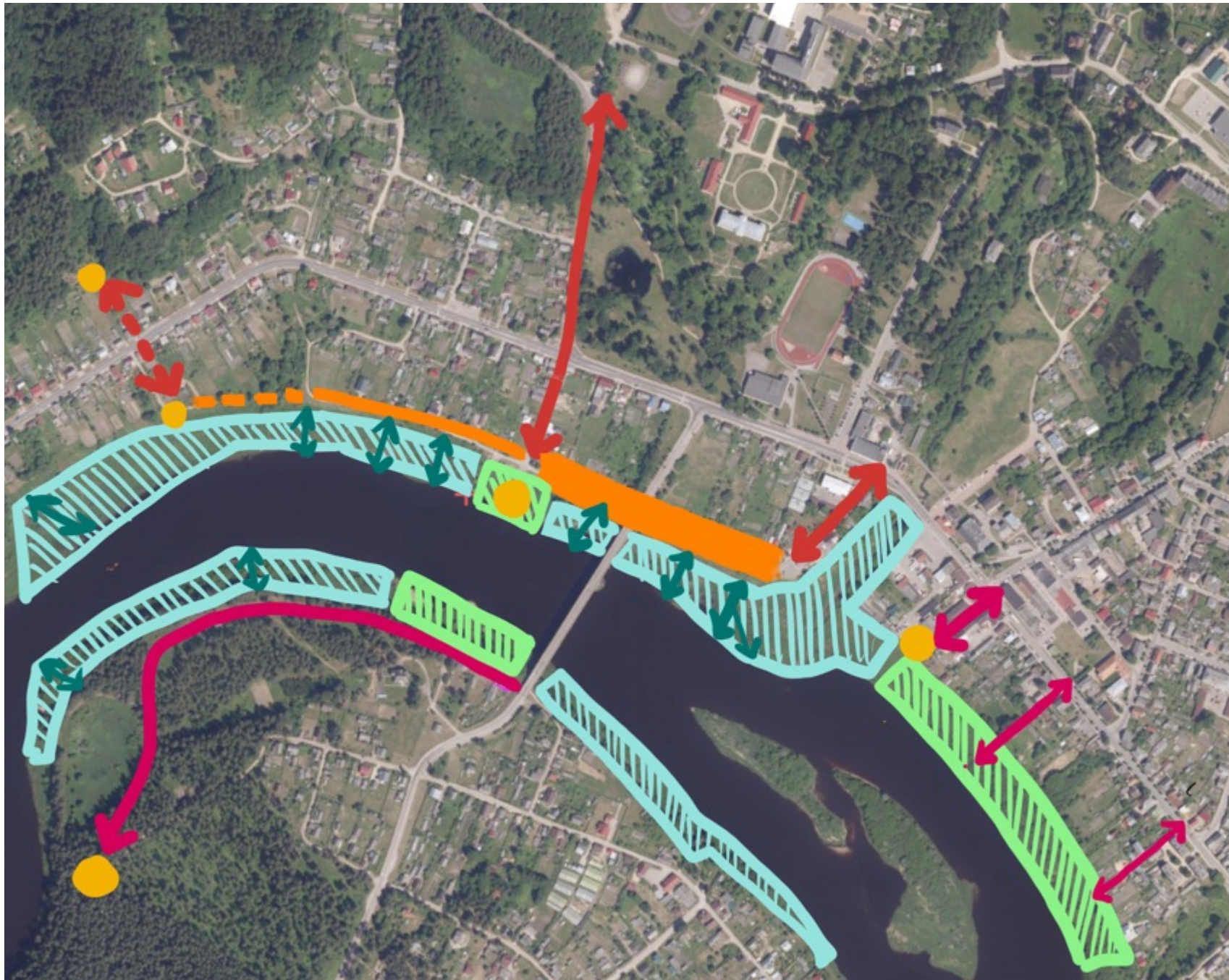


Daugava strategy



Daugava strategy





- ATTRACTION POINTS
- ▨ NATURE/ACTIVE EXPERIANCE
- ▨ NATURE/PASSIVE EXPERIANCE
- ↔ PASSIVE CONNECTIONS
- ↔ ACTIVE CONNECTION

Zoning approach for Krāslava waters

Short term

- Cleaning up rivers
- Open views and showing the the treasure
- Place to admire the water (few benches)

Mid term

- Pathway structure and connections, including promenade
- Guideline development for 5 river strategy and Daugava strategy
- Enhancing public beach and access to waters

Long term

- Total river-town connection
- Ponton bridge / floating platform solutions (respecting water flows)
- Recreational zone development

Let there be place for everyone to admire the water...

